

Core PVC Stops

Flexible PVC Water Stops for
Construction Joints



Description

Core PVC Stops are high grade PVC extrusion formulated to meet the highest performance specifications. Core Water Stops are supplied as straight lengths along with factory fabricated junction pieces to simply layouts and site jointing.

- Unique design
- Full range of profiles
- Full range of factory fabricated junctions
- Continuous 4 valve network
- Reinforced edge flange with brass eyelets on internal sections for secure fixing
- Easy jointing system
- Approved for use in contact with potable water

Recommended Uses

Embedded in concrete, across and/or along the joint, Core PVC Stops form a watertight diaphragm that prevents the passage of fluid through the joint.

- Water Retaining
Tanks, reservoirs and sewerage plants, swimming pools, Elevated water towers, Oil storage tank bond walls, Culverts, Canals and dams.
- Water Excluding
Basements, Underground car parks, Buried storage tanks, Retaining walls, Tunnels and subways.

SERVICES

Cementitious coating

Crystalling Coating

Addmixture

Sealant

Grout

Epoxy primer

Repair Mortar

Flooring

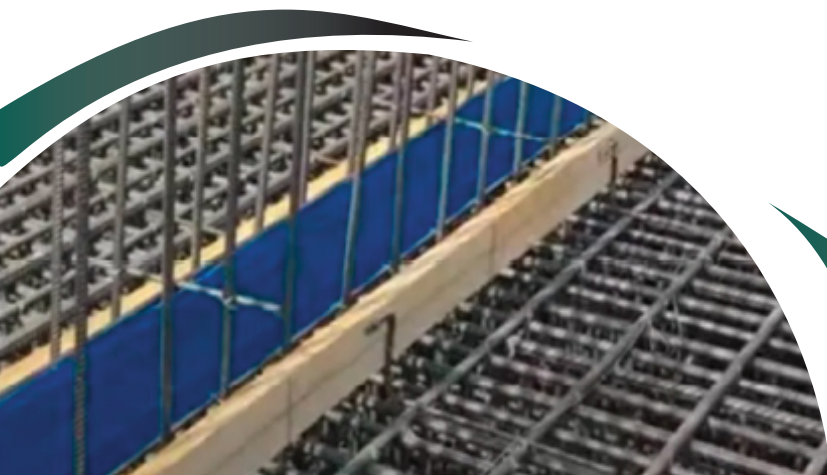
PU flooring

PU coating

Bitumen Coating

Latex

Waterstopper



Technical Data

Density	1.45 ± 0.15 kg/l
Chemical Base	Polyvinyl Chloride
Service Temperatures	-35°C to +55°C
Tensile Strength:	> 10 N/mm ² (DIN 53455); > 12.17 N/mm ² (CRD-C573, ASTM D412); > 11 N/mm ² (BS2782 M320A)
Tear StrengthQ	> 12 N/mm ² (DIN 53507A)
Shore A Hardness	90±5 (DIN 53505)
Elongation at Break	>300% (DIN 53455); >300% (CRD-C 573, ASTM D412); >300% (BS 2782 M320A)
Chemical Resistance	Water, seawater, sewage, road salt solution.
Temporarily	Diluted inorganic alkalis, Mineral acids and mineral oils
Alkali Resistance	Passed. CRD-C 572-65

Important Information

Supplied in: 25 kg bag

Storage: Store dry, frost-free, out of direct sunlight

Shelf Life: 6 months in original packaging

Hazard Class: Non-hazardous goods. Consult MSDS for details.

Application Guidelines

Selection

Choose the appropriate Core Water Stop based on the type of joint, concrete thickness, grade of concrete, reinforcement position, expected movement (expansion/shear) and the water head to which it will be exposed.

General Guidelines

Following a few simple rules during installation will ensure a reliable result.

Installation / Fixation

Centrally place Core Water Stops in the middle of the concrete section.

Anchor to reinforcement easily with special clips (approximately 5 clips per metre).

For surface installation, position Core Water Stops on the formwork or on the surface of the base/lean concrete before pouring.

Precautions & Limitations

Welding should only take place in a well-ventilated area.

Operators should wear an oxygen mask or other appropriate respiratory protection during welding.

The information contained in this brochure reflects our current knowledge and experience and is intended to assist designers, contractors and end users. It does not release the purchaser from carrying out their own tests and verifications to ensure the product is suitable for the specific application. All data presented are based on tests under normal laboratory conditions; actual values may vary on site. Recommendations are given in good faith but without warranty, as conditions beyond our control may affect product performance. Core Chemicals reserves the right to modify specifications without prior notice. The purchaser is responsible for ensuring the product is used in accordance with current standards and regulations. Our technical service team is available to provide guidance at any time.

The Core Chemicals

Office 5, 129 C 24th Commercial St,
DHA Phase 2 Ext. Karachi

info@thecorechem.com
www.thecorechem.com.pk
+92 339 078 6823